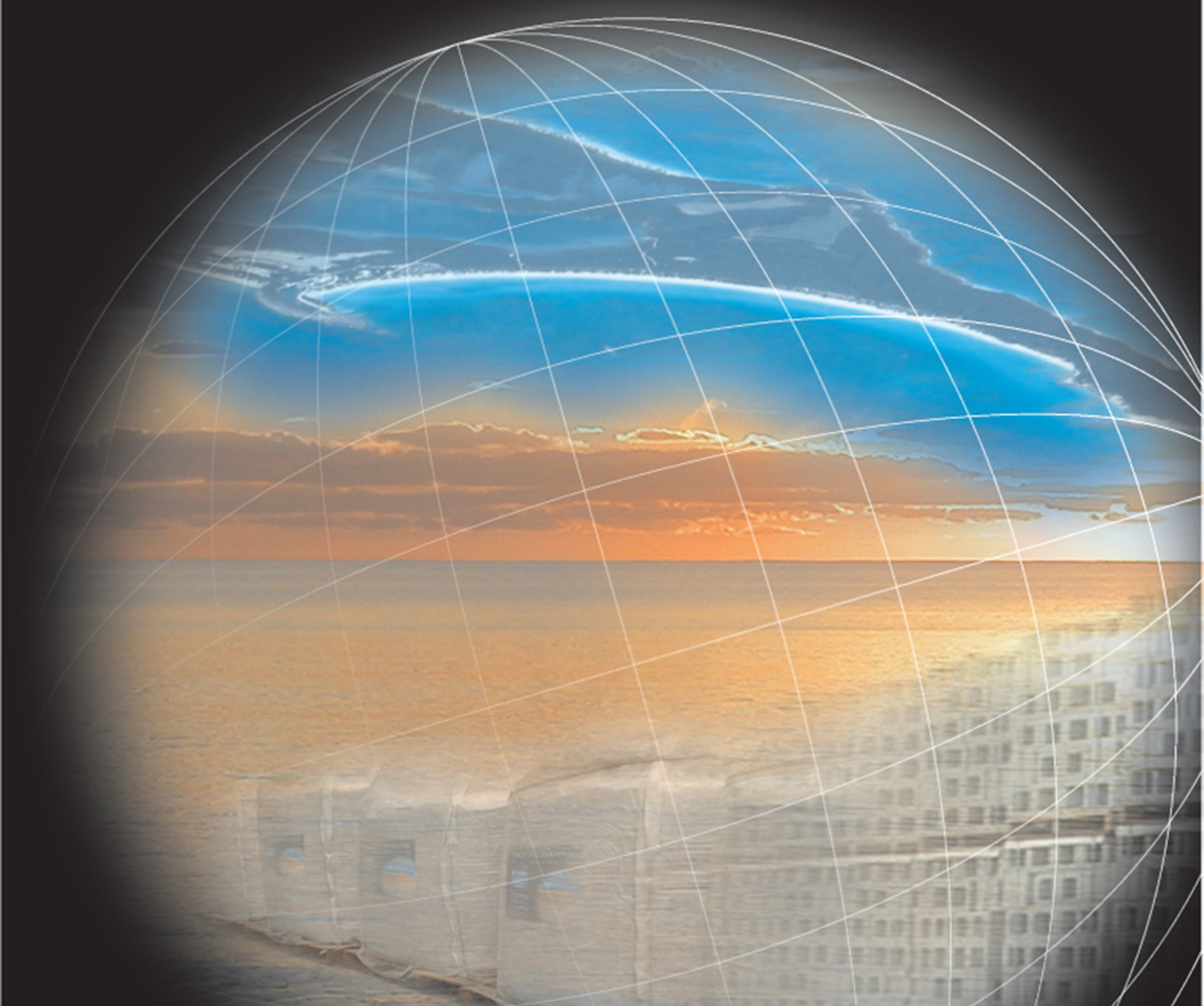


# TRICO INTERNATIONAL

I N C O R P O R A T E D

## *Customer Product Guide*



USA & US TERRITORIES  
TEL. 800 .528 .3365

BAHAMAS & CARIBBEAN  
TEL. 941.747.9021

FAX US FOR A QUOTE  
FAX. 941.747.3064

5303 4TH AVENUE WEST . BRADENTON . FL. 34209

# TRICO INTERNATIONAL

INCORPORATED

## PRODUCTS & MATERIALS

### CEMENT PRODUCTS

#### Slag Cement

- Super Bags
- Bulk (Tankers)

#### Type 1 Grey Portland Cement

- 94 lb Bags - 1 Truckload=480/504 Bags
- Super Bags- 1 Truckload=16 Super Bags
- Bulk (Tankers)- Filled By Weight

#### Type N Masonry Cement

- 70 lb Bags - 1 Truckload=600 Bags

#### Type M/S High Strength

- 80 lb Bags - 1 Truckload=600 Bags

#### White Cement

- 94 lb Bags- 1 Truckload=504 Bags

#### Stucco

- 80 lb Bags - 1 Truckload=600 Bags

#### White Lime

- 50 lb Bag - 1 Truckload=900 Bags

#### Mortar Mix

- 40 lb, 60 lb, 80 lb Bags

#### Aggregates

#### 20/30 Silica Sand - Sandblasting Sand

- 50 lb Bag- 1 Truckload=896Bags

#### KEL-CRETE Admixture

#### Admixtures for Concrete

#### Rebar & Rebar Accessories

#### Bonding Agents

#### Concrete Block

\*(See Spec Sheet for Sizes Available)

#### Splitface & Specialty Block

#### Pavers

#### Precast Lintels & Sills

#### Reinforcement Steel and Wire Mesh

### FIBER - CONCRETE & STUCCO

#### Mini-Fiber - Various Size Bags

1/2", 3/4", 1 1/2" Cuts

- 3/4 lb, 1.0 lb, 1.5 lb, 5.0 lb, 7.0 lb Bags

- \*Also Packaged in 3oz. Bags

1 Bag per 94 lb Bag of Portland Cement

#### Fibrillated Fiber - Various Size Bags

1/2", 3/4", 1", 1 1/2" & 2" Cuts

- 3/4 lb, 1.0 lb, 1.5 lb., 2.0 lb., 6 3/4 lb Bags

### FLOORING MATERIALS

#### Thinset & Tile Grouts

*"Serving Industry with Quality Products Since 1990"*

USA & US TERRITORIES

BAHAMAS & CARIBBEAN

FAX US FOR A QUOTE

TEL. 800 .528 .3365

TEL. 941.747.9021

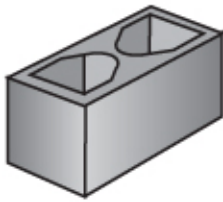
FAX. 941.747.3064

5303 4TH AVENUE WEST . BRADENTON . FL. 34209

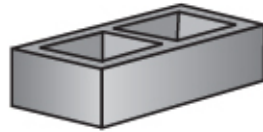
# TRICO INTERNATIONAL

I N C O R P O R A T E D

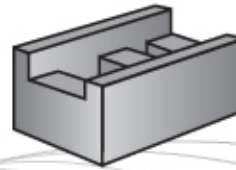
## CONCRETE BLOCK



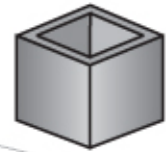
Regular & High Strength  
8" X 8" x 16"



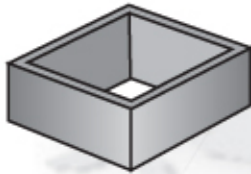
1/2 High  
8" X 4" x 16"



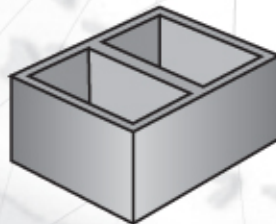
Knockout  
8" X 8" x 16"



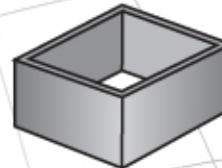
1/2 Block  
8" X 8" x 8"



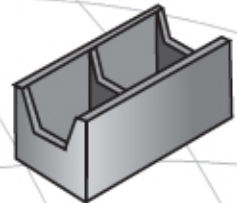
Commercial Column  
16" X 8" x 16"



Foundation  
12" X 8" x 16"



Column  
12" X 8" x 12"



Bond Beam  
8" X 8" x 16"

## BUILDING MATERIALS

Elastometric Roof & Wall Coasting  
Windows  
Wood & Steel Doors (Int & Ext.)  
Suretube  
Easy Spread Coatings & Paints  
Lumber  
Lumber Accessories  
Drywall & Stucco  
Roofing Materials

## WE ARE HAPPY TO HELP!

**PLEASE ASK US!**  
For materials that may not listed that  
you may need!

\*\*\*Please Note that Not All Products  
are Available to Ship to All Markets.  
Call for More Information.

USA & US TERRITORIES

TEL. 800 .528 . 3365

BAHAMAS & CARIBBEAN

TEL. 941.747.9021

FAX US FOR A QUOTE

FAX. 941.747.3064

5303 4TH AVENUE WEST . BRADENTON . FL. 34209

# TRICO INTERNATIONAL

I N C O R P O R A T E D

## REQUEST FOR FAX QUOTATION

Please Fax Quotation to: 941.747.3064

### COMPANY INFORMATION

Company Name: \_\_\_\_\_

Telephone: \_\_\_\_\_

Fax Number: \_\_\_\_\_

Island: \_\_\_\_\_

DELIVERY DATE REQUESTED:

\_\_\_\_\_

### DELIVERY INFORMATION

Delivered To: \_\_\_\_\_  
(shipping Company)

Address: \_\_\_\_\_

Port: \_\_\_\_\_

### PRODUCT DESCRIPTION

### QUANTITY

Item #1

Item #2

Item #3

Item #4

Item #5

Item #6

Item #7

Item #8

USA & US TERRITORIES

BAHAMAS & CARIBBEAN

FAX US FOR A QUOTE

TEL. 800 .528 . 3365

TEL. 941.747.9021

FAX. 941.747.3064

5303 4TH AVENUE WEST . BRADENTON . FL. 34209